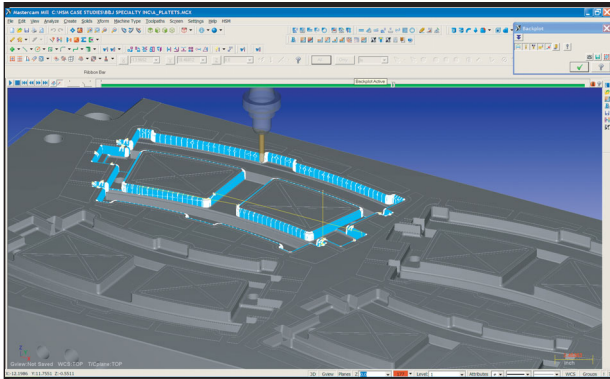


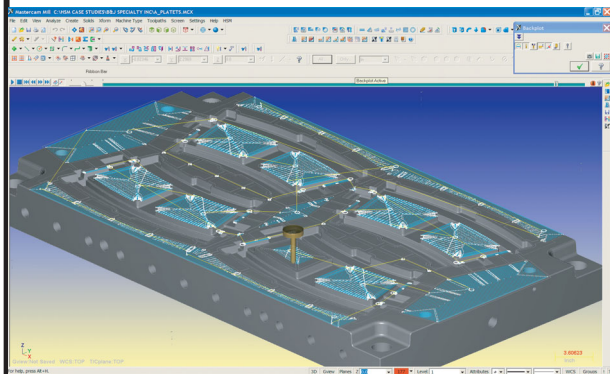


“Finally, I can truly rough in high-speed on any part without fear thanks to CIMCO HSM” - Scott Sizemore, B&J Specialty Inc.

For more than 25 years B&J Specialty has been providing Mold, Die and Build-to-Print Tooling services that meet or exceed their customers expectations. Investing in new technology is one of the keys to their ability to deliver on complex jobs at competitive prices.



HSM Performance Pack Toolpath plotted in Mastercam X



Additional HSM finishing toolpaths being plotted in Mastercam X

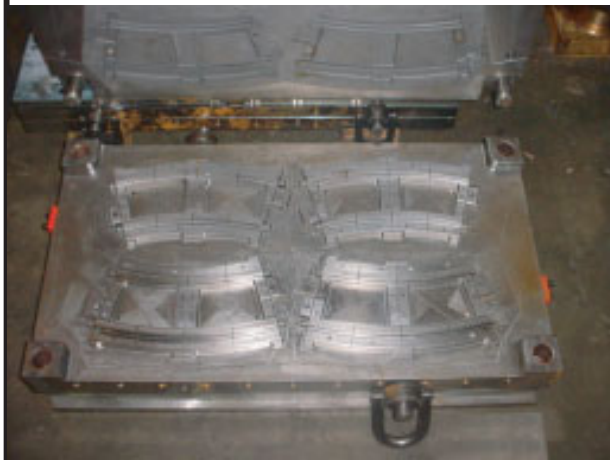


Photo of Finished Production Mold Set

The Challenge: B&J Specialty is considered a large mold and die shop by anyone’s standards today. They have 12 CNCs and 5 high-end programming stations with Mastercam to keep them running. “B&J specializes in very large and often complex molds that require a great deal of programming and processing time before we get the CNC programs to our machines. Reducing programming time on the PC and roughing time on our CNCs is critical to our ability to keep existing accounts and land new orders,” states Scott Sizemore, CNC programmer for B&J. “As more and more of our work grew in complexity we found ourselves at a point where Mastercam was struggling to produce the toolpaths we needed. That, and long processing times were negatively impacting our production schedules and our ability to meet ship dates.”

The Recommendation: Frustrated by production delays, B&J Specialty contacted their Mastercam reseller (Cad/Cam Technologies of IN) to see what alternatives they had in speeding up their processes to get the highest quality parts off their machines faster.

Cad/Cam Technologies reviewed their programming operations to make sure they were fully utilizing the capabilities of Mastercam. It was determined that the results they were looking for required a more advanced solution. It was at that point Cad/Cam Technologies recommended CIMCO’s HSM Performance Pack for Mastercam.

Mitch Kinder, Senior Applications Engineer for Cad/Cam Technologies, explained, “B&J had maxed out the capabilities of Mastercam. They were already doing things as efficiently as possible with the technology they owned. We had other customers with the same challenge - to reduce roughing times on large molds, to reduce cycle times with improved surface finish and quality - and HSM had worked exceptionally well for them. We didn’t hesitate to recommend CIMCO’s HSM solution to Scott and the folks at B&J”

CIMCO’s exclusive Adaptive Clearing™ functionality included with the HSM Performance Pack for Mastercam is a revolutionary roughing capability that generates toolpaths for roughing and re-roughing where tool engagement is maximized and then optimized for the highest feedrates possible. Users frequently see an increase in feed rates of 150-200% for all of their Adaptive Clearing™ roughing toolpaths.

The Results: Within weeks of purchasing the HSM Performance Pack with Adaptive Clearing™ B&J began to see impressive results. Scott summed up their experience, “We are very, very pleased. CIMCO HSM (Performance Pack) with Adaptive Clearing™ simply allows us to program and machine our parts more efficiently, saving us 55% to 65% on roughing times alone. As a result, we have saved thousands of hours of machining time just in our roughing process improvements. Our programming time has been significantly reduced and the parts we pull off the machines programmed with the HSM Performance Pack are virtually ready to ship. Finally, I can truly rough in high-speed on any part without fear thanks to CIMCO HSM.”

When asked by Cad/Cam Technologies how long it took for Scott to achieve the results he described Scott answered, “We were able to start cutting chips in 15 minutes.”

For more information on B&J Specialty, Inc. visit them on the web at www.bjspecialtyinc.com For more information on the HSM Performance Pack for Mastercam goto www.cimco-hsm.com

Adaptive Clearing™ is included with HSM Performance Pack and is also available separately.